

# Box Plots Using Statistics Application

## Raw Data

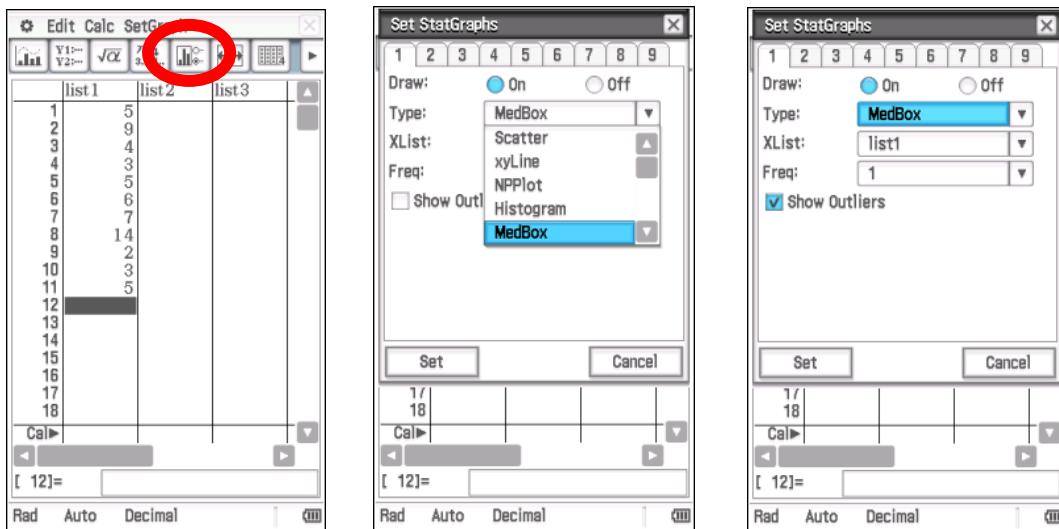
Draw a box plot of the data below.

5 9 4 3 5 6 6 5 7 14 2 3 5

Return to the menu by selecting **Menu**  
Select **Statistics**

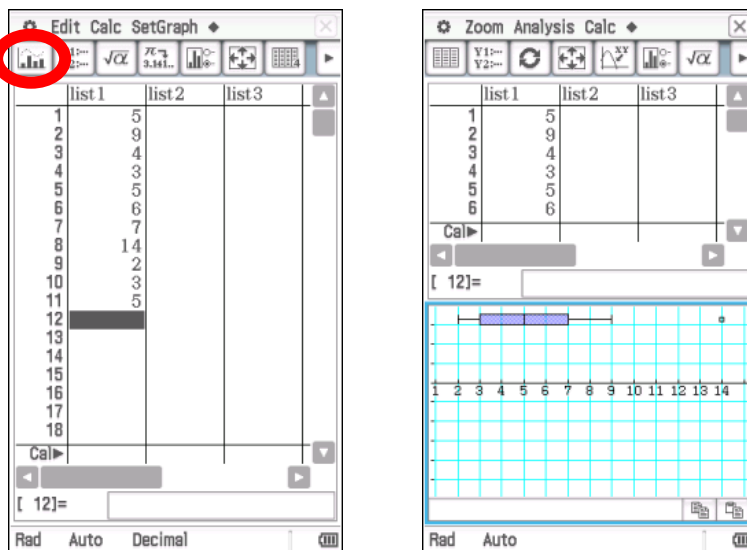
Enter the data into List 1. Press **Enter** after each number to move down.

Press the **Third Icon from the Right** and select **MedBox** from the **Type** menu, **Xlist** is **List1**, **Freq** is **1**.  
Check the box **Show Outliers**.

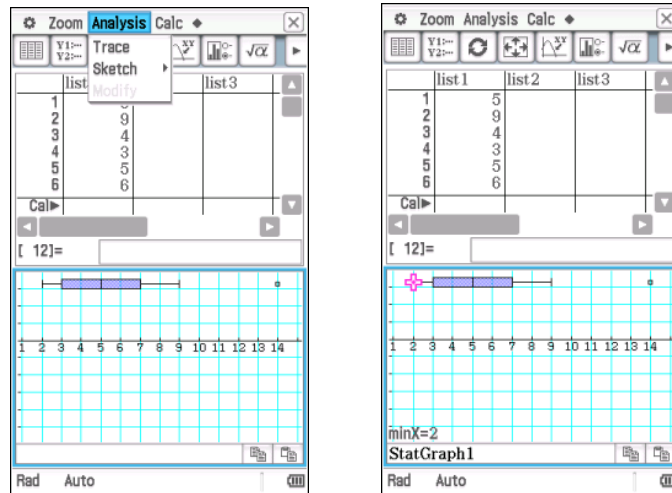


Tap **Set**.

Tap the **Left Hand icon**. The box plot will be displayed. The outliers will be displayed as a point. In this case 14 is an outlier, 9 is indicated as the number closest to the outlier.



If you wish you can use **Analysis – Trace** to check the data.



### Data in Frequency Table

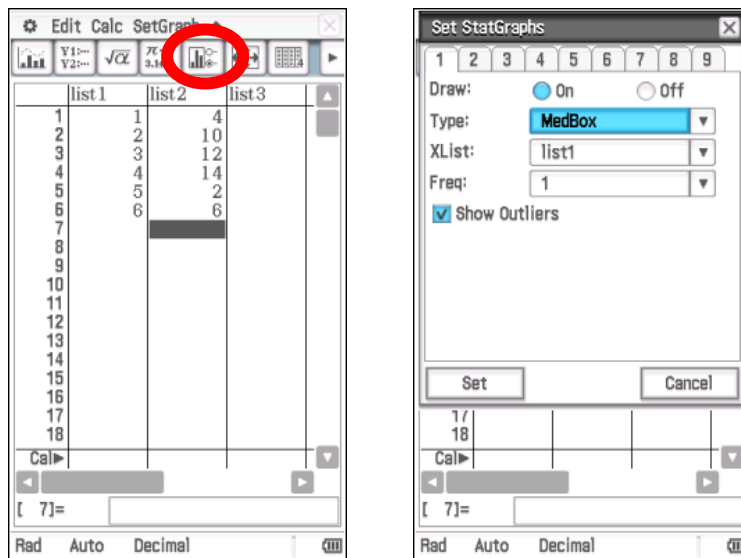
Draw a Box Plot of the data in the frequency table below

Score (x)	Frequency (f)
1	4
2	10
3	12
4	14
5	2
6	6

Return to the menu by selecting **Menu**  
Select **Statistics**

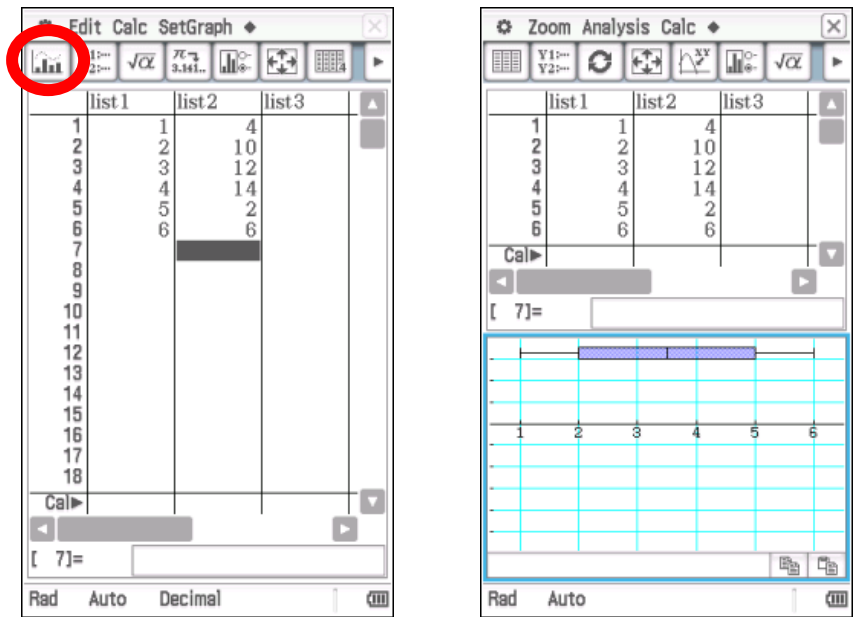
Enter the data into List 1 and List 2. Press **Enter** after each number to move down. Use the **Arrows** to move across to the next list.

Press the **Third Icon from the Right** and select **MedBox** from the **Type** menu, **Xlist** is **List1**, **Freq** is **list2**.



Tap **Set**.

Tap the **Left Hand icon**. The box plot will be displayed.



If you wish you can use **Analysis – Trace** to check the data.

