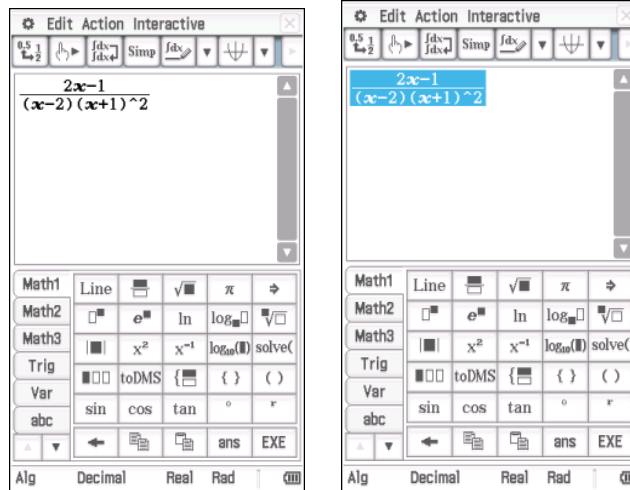


Partial Fractions – ClassPad

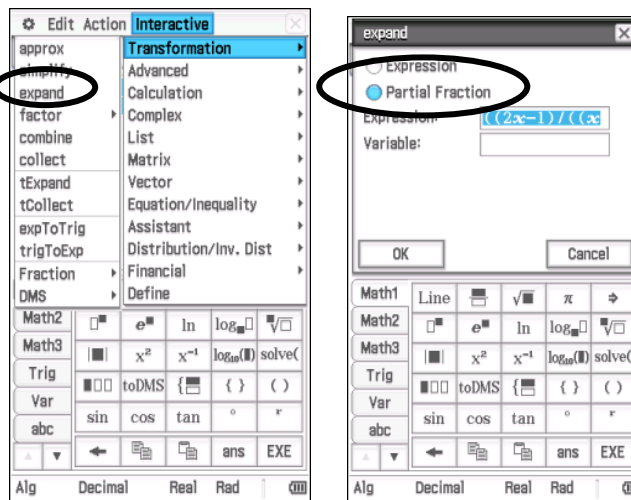
Express $\frac{2x-1}{(x-2)(x+1)^2}$ as partial fraction.

There are two ways this can be done. Make sure the calculator is set to **STANDARD**

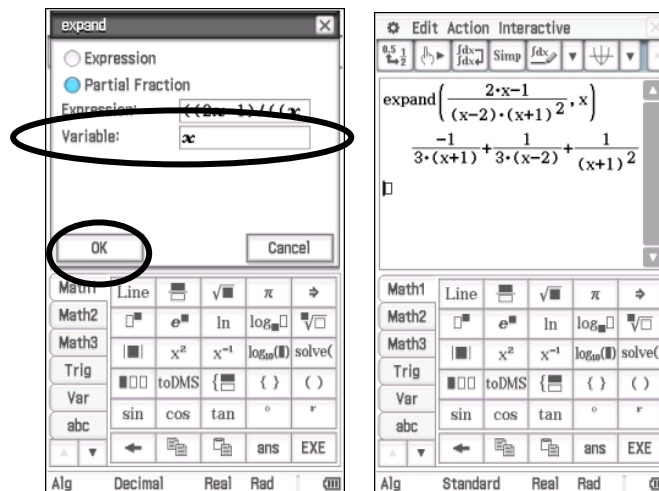
1. On the **main** screen enter the expression and **highlight** it.



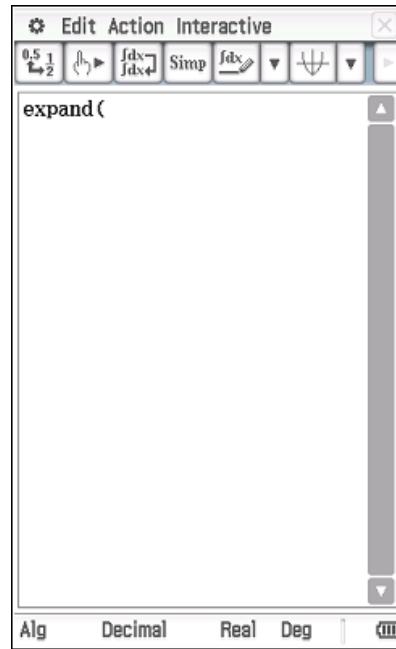
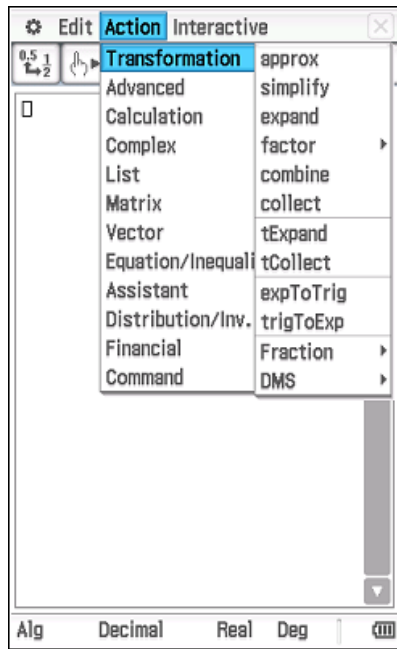
Then Tap **Interactive – Transformation – expand – Partial Fraction**



Type **x** in the **variable** box and Tap **OK**



2. On the **main screen Tap Action – Transformation – Expand.**



Use the **Fraction template** on the **keyboard** and enter the function followed by $,x$
 Make sure the calculator is set to **Standard** and **press EXE**

